



Our reference: 12/C20/LTR/Y395

12<sup>th</sup> March 2020

**Dear Valued Customer / Business Partners,**

**RE: “ALSEAL” AS-205 High Performance Silicone Sealant – RoHS 1 & 2 Compliant**

This letter is to confirm that “ALSEAL” AS-205 High Performance Silicone Sealant has been tested by an ISO/IEC 17025 accredited independent third-party testing lab for the following:

1. The presence of the following ten substances restricted under the Restriction of Hazardous Substances (RoHS 3)(EU Directive 2015/863):

<b>Substance</b>	<b>Maximum permitted concentration</b>
Cadmium (Cd)	100 ppm (0.01%)
Lead (Pb)	1000 ppm (0.1%)
Mercury (Hg)	1000 ppm (0.1%)
Hexavalent chromium (Cr <sup>6+</sup> )	1000 ppm (0.1%)
Polybrominated biphenyls (PBBs)	1000 ppm (0.1%)
Polybrominated diphenyl ethers (PBDEs)	1000 ppm (0.1%)
Bis (2-ethyhexyl) phthalate (DEHP)	1000 ppm (0.1%)
Butyl benzyl phthalate (BBP)	1000 ppm (0.1%)
Dibutyl phthalate (DBP)	1000 ppm (0.1%)
Diisobutyl phthalate (DIBP)	1000 ppm (0.1%)



**ALSEAL MARKETING SDN. BHD.** Co.No.: 200301022720 (625140-D)  
Lot PT 2291, Jalan Kampung Baru, Kampung Baru Sg. Buloh, 47000 Sungai Buloh, Selangor.  
**Tel:** +603-6143 3808 **Fax:** +603-6157 8002 **Email:** info@alsealmarketing.com  
**Website:** www.alsealmarketing.com

### **Conclusion**

Based on the test report: CRSSA/200336368-CA35086, we can conclude that AS-205 is **RoHS I & RoHS II compliant**.

Should you require further information concerning the above product, please do not hesitate to contact us.

Thank you.

Yours sincerely,

For Alseal Marketing Sdn. Bhd.

A handwritten signature in black ink, consisting of a large loop followed by a horizontal stroke and a small dash.

Prepared by: Yap Wai Hoong  
(R&D Chemist)

A handwritten signature in black ink, featuring a large, sweeping loop that encircles the name 'Alex Ng'.

Verified by: Alex Ng  
(Technical Manager)

## TEST REPORT:

No. CRSSA/200336368-CA35086  
Job Ref. CRS/2020-03-02-025

REPORTED DATE: 12/03/2020

### ALSEAL MARKETING SDN BHD

LOT 2291, JALAN KAMPUNG BARU, KG.  
BARU SUNGAI BULOH, 47000 SELANGOR.

The following sample(s) was/were submitted and identified by applicant as:

SAMPLE DESCRIPTION : AS-205 HIGH PERFORMANCE SILICONE SEALANT  
SAMPLE RECEIVED : 02/03/2020  
TESTING PERIOD : 02/03/2020 to 09/03/2020

TEST REQUESTED : Selected test(s) as requested by customer  
TEST METHOD : -PLEASE REFER TO NEXT PAGE(S)-  
TEST RESULTS : -PLEASE REFER TO NEXT PAGE(S)-

SIGNED FOR AND ON BEHALF OF  
SGS (MALAYSIA) SDN BHD

CHEE TUCK CHOON  
SECTION HEAD  
IKM NO. M/3983/6401/12/14



Test Report Form No.: SGS/TR/CRS/001, Ver: 6.0, Effective Date: 13/01/2020

Page 1 of 7

This document is issued by the Company subject to its General Conditions of Service printed overleaf, available on request or accessible at <https://www.sgs.com/en/terms-and-conditions> and, for electronic format documents, subject to Terms and Conditions for Electronic Documents at <https://www.sgs.com/en/terms-and-conditions/terms-e-document>. Attention is drawn to the limitation of liability, indemnification and jurisdiction issues defined therein. Any holder of this document is advised that information contained hereon reflects the Company's findings at the time of its intervention only and within the limits of Client's instructions, if any. The Company's sole responsibility is to its Client and this document does not exonerate parties to a transaction from exercising all their rights and obligations under the transaction documents. This document cannot be reproduced except in full, without prior written approval of the Company. Any unauthorized alteration, forgery or falsification of the content or appearance of this document is unlawful and offenders may be prosecuted to the fullest extent of the law. Unless otherwise stated the results shown in this test report refer only to the sample(s) tested and such sample(s) are retained for 14 days (for perishable samples) or 90 days only.

SGS (Malaysia) Sdn.Bhd.  
(Company No. 10871-T)

Lot 4, Persiaran Jubli Perak, Seksyen 22, 40300 Shah Alam, Selangor Darul Ehsan, Malaysia.  
t +6(03) 7627 0080 f +6 (03) 7627 0082 [www.sgs.com](http://www.sgs.com)

## TEST REPORT:

No. CRSSA/200336368-CA35086  
Job Ref. CRS/2020-03-02-025

REPORTED DATE: 12/03/2020

## TEST RESULTS:

### Test Part Description

Sample Description: -PLEASE REFER TO PAGE 1-

RoHS Directive (EU) 2015/863 amending Annex II to Directive 2011/65/EU

Test Item(s):	Unit	Test Method	Result	MDL	Limit
Cadmium (Cd)	mg/kg	With reference to IEC 62321-5:2013, determination of Cadmium by ICP-OES.	N.D.	2	Max 100
Lead (Pb)	mg/kg	With reference to IEC 62321-5:2013, determination of Lead by ICP-OES.	N.D.	2	Max 1000
Mercury (Hg)	mg/kg	With reference to IEC 62321-4:2013+A1:2017, determination of Mercury by ICP-OES.	N.D.	2	Max 1000
Hexavalent Chromium (CrVI)	mg/kg	With reference to IEC 62321-7-2:2017, determination of Hexavalent Chromium by Colorimetric Method using UV-Vis.	N.D.	8	Max 1000
Sum of PBBs	mg/kg	With reference to IEC 62321-6:2015, determination of PBBs and PBDEs by GC-MS.	N.D.	5	Max 1000
Monobromobiphenyl	mg/kg	With reference to IEC 62321-6:2015, determination of PBBs and PBDEs by GC-MS.	N.D.	5	-
Dibromobiphenyl	mg/kg	With reference to IEC 62321-6:2015, determination of PBBs and PBDEs by GC-MS.	N.D.	5	-
Tribromobiphenyl	mg/kg	With reference to IEC 62321-6:2015, determination of PBBs and PBDEs by GC-MS.	N.D.	5	-
Tetrabromobiphenyl	mg/kg	With reference to IEC 62321-6:2015, determination of PBBs and PBDEs by GC-MS.	N.D.	5	-
Pentabromobiphenyl	mg/kg	With reference to IEC 62321-6:2015, determination of PBBs and PBDEs by GC-MS.	N.D.	5	-
Hexabromobiphenyl	mg/kg	With reference to IEC 62321-6:2015, determination of PBBs and PBDEs by GC-MS.	N.D.	5	-
Heptabromobiphenyl	mg/kg	With reference to IEC 62321-6:2015, determination of PBBs and PBDEs by GC-MS.	N.D.	5	-
Octabromobiphenyl	mg/kg	With reference to IEC 62321-6:2015, determination of PBBs and PBDEs by GC-MS.	N.D.	5	-
Nonabromobiphenyl	mg/kg	With reference to IEC 62321-6:2015, determination of PBBs and PBDEs by GC-MS.	N.D.	5	-
Decabromobiphenyl	mg/kg	With reference to IEC 62321-6:2015, determination of PBBs and PBDEs by GC-MS.	N.D.	5	-

SIGNED FOR AND ON BEHALF OF  
SGS (MALAYSIA) SDN BHD

CHEE TUCK CHOON  
SECTION HEAD  
IKM NO. M/3983/6401/12/14



Test Report Form No.: SGS/TR/CRS/001, Ver: 6.0, Effective Date: 13/01/2020

Page 2 of 7

This document is issued by the Company subject to its General Conditions of Service printed overleaf, available on request or accessible at <https://www.sgs.com/en/terms-and-conditions> and, for electronic format documents, subject to Terms and Conditions for Electronic Documents at <https://www.sgs.com/en/terms-and-conditions/terms-e-document>. Attention is drawn to the limitation of liability, indemnification and jurisdiction issues defined therein. Any holder of this document is advised that information contained hereon reflects the Company's findings at the time of its intervention only and within the limits of Client's instructions, if any. The Company's sole responsibility is to its Client and this document does not exonerate parties to a transaction from exercising all their rights and obligations under the transaction documents. This document cannot be reproduced except in full, without prior written approval of the Company. Any unauthorized alteration, forgery or falsification of the content or appearance of this document is unlawful and offenders may be prosecuted to the fullest extent of the law. Unless otherwise stated the results shown in this test report refer only to the sample(s) tested and such sample(s) are retained for 14 days (for perishable samples) or 90 days only.

SGS (Malaysia) Sdn Bhd.  
(Company No. 10871-T)

Lot 4, Persiaran Jubli Perak, Seksyen 22, 40300 Shah Alam, Selangor Darul Ehsan, Malaysia.  
t +6(03) 7627 0080 f +6 (03) 7627 0082 [www.sgs.com](http://www.sgs.com)

## TEST REPORT:

No. CRSSA/200336368-CA35086  
Job Ref. CRS/2020-03-02-025

REPORTED DATE: 12/03/2020

## TEST RESULTS:

### Test Part Description

Sample Description: -PLEASE REFER TO PAGE 1-

RoHS Directive (EU) 2015/863 amending Annex II to Directive 2011/65/EU

Test Item(s):	Unit	Test Method	Result	MDL	Limit
Sum of PBDEs	mg/kg	With reference to IEC 62321-6:2015, determination of PBBs and PBDEs by GC-MS.	N.D.	5	Max 1000
Monobromodiphenyl ether	mg/kg	With reference to IEC 62321-6:2015, determination of PBBs and PBDEs by GC-MS.	N.D.	5	-
Dibromodiphenyl ether	mg/kg	With reference to IEC 62321-6:2015, determination of PBBs and PBDEs by GC-MS.	N.D.	5	-
Tribromodiphenyl ether	mg/kg	With reference to IEC 62321-6:2015, determination of PBBs and PBDEs by GC-MS.	N.D.	5	-
Tetrabromodiphenyl ether	mg/kg	With reference to IEC 62321-6:2015, determination of PBBs and PBDEs by GC-MS.	N.D.	5	-
Pentabromodiphenyl ether	mg/kg	With reference to IEC 62321-6:2015, determination of PBBs and PBDEs by GC-MS.	N.D.	5	-
Hexabromodiphenyl ether	mg/kg	With reference to IEC 62321-6:2015, determination of PBBs and PBDEs by GC-MS.	N.D.	5	-
Heptabromodiphenyl ether	mg/kg	With reference to IEC 62321-6:2015, determination of PBBs and PBDEs by GC-MS.	N.D.	5	-
Octabromodiphenyl ether	mg/kg	With reference to IEC 62321-6:2015, determination of PBBs and PBDEs by GC-MS.	N.D.	5	-
Nonabromodiphenyl ether	mg/kg	With reference to IEC 62321-6:2015, determination of PBBs and PBDEs by GC-MS.	N.D.	5	-
Decabromodiphenyl ether	mg/kg	With reference to IEC 62321-6:2015, determination of PBBs and PBDEs by GC-MS.	N.D.	5	-

SIGNED FOR AND ON BEHALF OF  
SGS (MALAYSIA) SDN BHD

  
CHEE TUCK CHOON  
SECTION HEAD  
IKM NO. M/3983/6401/12/14



Test Report Form No.: SGS/TR/CRS/001, Ver: 6.0, Effective Date: 13/01/2020

Page 3 of 7

This document is issued by the Company subject to its General Conditions of Service printed overleaf, available on request or accessible at <https://www.sgs.com/en/terms-and-conditions> and, for electronic format documents, subject to Terms and Conditions for Electronic Documents at <https://www.sgs.com/en/terms-and-conditions/terms-e-document>. Attention is drawn to the limitation of liability, indemnification and jurisdiction issues defined therein. Any holder of this document is advised that information contained hereon reflects the Company's findings at the time of its intervention only and within the limits of Client's instructions, if any. The Company's sole responsibility is to its Client and this document does not exonerate parties to a transaction from exercising all their rights and obligations under the transaction documents. This document cannot be reproduced except in full, without prior written approval of the Company. Any unauthorized alteration, forgery or falsification of the content or appearance of this document is unlawful and offenders may be prosecuted to the fullest extent of the law. Unless otherwise stated the results shown in this test report refer only to the sample(s) tested and such sample(s) are retained for 14 days (for perishable samples) or 90 days only.

SGS (Malaysia) Sdn Bhd.  
(Company No. 10871-T)

Lot 4, Persiaran Jubli Perak, Seksyen 22, 40300 Shah Alam, Selangor Darul Ehsan, Malaysia.  
t +6(03) 7627 0080 f +6 (03) 7627 0082 [www.sgs.com](http://www.sgs.com)

## TEST REPORT:

No. CRSSA/200336368-CA35086  
Job Ref. CRS/2020-03-02-025

REPORTED DATE: 12/03/2020

## TEST RESULTS:

### Test Part Description

Sample Description: -PLEASE REFER TO PAGE 1-

RoHS Directive (EU) 2015/863 amending Annex II to Directive 2011/65/EU

Test Item(s):	Unit	Test Method	Result	MDL	Limit
Dibutyl phthalate (DBP) (CAS No. 84-74-2)	mg/kg	With reference to IEC 62321-8:2017, determination of phthalates by GC-MS.	N.D.	50	Max 1000
Benzyl butyl phthalate (BBP) (CAS No. 85-68-7)	mg/kg	With reference to IEC 62321-8:2017, determination of phthalates by GC-MS.	N.D.	50	Max 1000
Di(2-ethylhexyl) phthalate (DEHP) (CAS No. 117-81-7)	mg/kg	With reference to IEC 62321-8:2017, determination of phthalates by GC-MS.	N.D.	50	Max 1000
Diisobutyl phthalate (DIBP) (CAS No. 84-69-5)	mg/kg	With reference to IEC 62321-8:2017, determination of phthalates by GC-MS.	N.D.	50	Max 1000

Note : (a) mg/kg = ppm ; (0.1wt% = 1000ppm)

(b) N.D. = Not Detected

(c) MDL = Method Detection Limit

(d) - = Not regulated

(e) On 4 June 2015, Commission Directive (EU) 2015/863 was published in the Official Journal of the European Union (OJEU) to include the phthalates BBP, DBP, DEHP and DIBP into ANNEX II of the RoHS Recast Directive. The new law restricts each phthalate to no more than 0.1% in each homogeneous material of an electrical product.

(f) The restriction of DEHP, BBP, DBP and DIBP shall apply to medical devices, including in vitro medical devices, and monitoring and control instruments, including industrial monitoring and control instruments, from 22 July 2021.

(g) The restriction of DEHP, BBP, DBP and DIBP shall not apply to cables or spare parts for the repair, the reuse, the updating of functionalities or upgrading of capacity of EEE placed on the market before 22 July 2019, and of medical devices, including in vitro medical devices, and monitoring and control instruments, including industrial monitoring and control instruments, placed on the market before 22 July 2021.

(h) The restriction of DEHP, BBP and DBP shall not apply to toys which are already subject to the restriction of DEHP, BBP and DBP through entry 51 of Annex XVII to Regulation (EC) No 1907/2006.

SIGNED FOR AND ON BEHALF OF  
SGS (MALAYSIA) SDN BHD

CHEE TUCK CHOON  
SECTION HEAD  
IKM NO. M/3983/6401/12/14



Test Report Form No.: SGS/TR/CRS/001, Ver: 6.0, Effective Date: 13/01/2020

Page 4 of 7

This document is issued by the Company subject to its General Conditions of Service printed overleaf, available on request or accessible at <https://www.sgs.com/en/terms-and-conditions> and, for electronic format documents, subject to Terms and Conditions for Electronic Documents at <https://www.sgs.com/en/terms-and-conditions/terms-e-document>. Attention is drawn to the limitation of liability, indemnification and jurisdiction issues defined therein. Any holder of this document is advised that information contained hereon reflects the Company's findings at the time of its intervention only and within the limits of Client's instructions, if any. The Company's sole responsibility is to its Client and this document does not exonerate parties to a transaction from exercising all their rights and obligations under the transaction documents. This document cannot be reproduced except in full, without prior written approval of the Company. Any unauthorized alteration, forgery or falsification of the content or appearance of this document is unlawful and offenders may be prosecuted to the fullest extent of the law. Unless otherwise stated the results shown in this test report refer only to the sample(s) tested and such sample(s) are retained for 14 days (for perishable samples) or 90 days only.

SGS (Malaysia) Sdn.Bhd.  
(Company No. 10871-T)

Lot 4, Persiaran Jubli Perak, Seksyen 22, 40300 Shah Alam, Selangor Darul Ehsan, Malaysia.  
t +6(03) 7627 0080 f +6 (03) 7627 0082 [www.sgs.com](http://www.sgs.com)

## TEST REPORT:

No. CRSSA/200336368-CA35086  
Job Ref. CRS/2020-03-02-025

REPORTED DATE: 12/03/2020

### Test Part Description :

Sample Description: -PLEASE REFER TO PAGE 1-



SGS authenticate the photo on original report only

SIGNED FOR AND ON BEHALF OF  
SGS (MALAYSIA) SDN BHD

*Chee Tuck Choon*  
CHEE TUCK CHOON  
SECTION HEAD  
IKM NO. M/3983/6401/12/14



Test Report Form No.: SGS/TR/CRS/001, Ver: 6.0, Effective Date: 13/01/2020

Page 5 of 7

This document is issued by the Company subject to its General Conditions of Service printed overleaf, available on request or accessible at <https://www.sgs.com/en/terms-and-conditions> and, for electronic format documents, subject to Terms and Conditions for Electronic Documents at <https://www.sgs.com/en/terms-and-conditions/terms-e-document>. Attention is drawn to the limitation of liability, indemnification and jurisdiction issues defined therein. Any holder of this document is advised that information contained hereon reflects the Company's findings at the time of its intervention only and within the limits of Client's instructions, if any. The Company's sole responsibility is to its Client and this document does not exonerate parties to a transaction from exercising all their rights and obligations under the transaction documents. This document cannot be reproduced except in full, without prior written approval of the Company. Any unauthorized alteration, forgery or falsification of the content or appearance of this document is unlawful and offenders may be prosecuted to the fullest extent of the law. Unless otherwise stated the results shown in this test report refer only to the sample(s) tested and such sample(s) are retained for 14 days (for perishable samples) or 90 days only.

SGS (Malaysia) Sdn.Bhd.  
(Company No. 10871-T)

Lot 4, Persiaran Jubli Perak, Seksyen 22, 40300 Shah Alam, Selangor Darul Ehsan, Malaysia.  
t +6(03) 7627 0080 f +6 (03) 7627 0082 [www.sgs.com](http://www.sgs.com)

## TEST REPORT:

No. CRSSA/200336368-CA35086

REPORTED DATE: 12/03/2020

Job Ref. CRS/2020-03-02-025

### 1. DETERMINATION OF CADMIUM CONTENT BY IEC 62321-5 2013

Sample Receiving and Registration  
↓  
Sample Preparation  
↓  
Weigh sample (0.2-0.5g) into digestion vessel  
↓  
Acid digestion (Microwave)  
↓  
"Totally Dissolved"  
↓  
Filtration  
↓  
Analyses by ICP

### 2. DETERMINATION OF LEAD CONTENT BY IEC 62321-5 2013

Sample Receiving and Registration  
↓  
Sample Preparation  
↓  
Weigh sample (0.2-0.5g) into digestion vessel  
↓  
Acid digestion (Microwave)  
↓  
"Totally Dissolved"  
↓  
Filtration  
↓  
Analyses by ICP

### 3. DETERMINATION OF MERCURY CONTENT BY IEC 62321-4 2013/AMD 1 2017

Sample Receiving and Registration  
↓  
Sample Preparation  
↓  
Weigh sample (0.1-0.5g) into digestion vessel  
↓  
Acid digestion (Microwave)  
↓  
"Totally Dissolved"  
↓  
Filtration  
↓  
Analyses by ICP

### 4a. DETERMINATION OF HEXAVALENT CHROMIUM BY IEC 62321-7-2 2017 (Other Materials)

Sample Preparation  
↓  
Digestion at 150~160°C  
↓  
Separating to Obtain Aqueous Phase  
↓  
pH Adjustment  
↓  
Add Diphenyl-Carbazide for Color Development  
↓  
Analyses by UV- Spectrophotometer (540 nm)

### 4b. DETERMINATION OF HEXAVALENT CHROMIUM BY IEC 62321-7-2 2017 (Soluble Polymers)

Sample Preparation  
↓  
Add Digestion Solution  
↓  
Ultrasonicate Sample  
↓  
pH Adjustment  
↓  
Add Diphenyl-Carbazide for Colour Development  
↓  
Analyses by UV- Spectrophotometer (540 nm)

### 5. DETERMINATION OF PBB/PBDE WITH GC-MS BY IEC 62321-6 2015

Sample Preparation  
↓  
Weigh sample (0.5-4.0g) into extraction thimble  
↓  
Soxhlet Extraction with Toluene  
↓  
Filter through 0.45 µm membrane filter  
↓  
Analyses by GC-MS (with appropriate dilution)

SIGNED FOR AND ON BEHALF OF  
SGS (MALAYSIA) SDN BHD

CHEE TUCK CHOON  
SECTION HEAD  
IKM NO. M/3983/6401/12/14



Test Report Form No.: SGS/TR/CRS/001, Ver: 6.0, Effective Date: 13/01/2020

Page 6 of 7

This document is issued by the Company subject to its General Conditions of Service printed overleaf, available on request or accessible at <https://www.sgs.com/en/terms-and-conditions> and, for electronic format documents, subject to Terms and Conditions for Electronic Documents at <https://www.sgs.com/en/terms-and-conditions/terms-e-document>. Attention is drawn to the limitation of liability, indemnification and jurisdiction issues defined therein. Any holder of this document is advised that information contained hereon reflects the Company's findings at the time of its intervention only and within the limits of Client's instructions, if any. The Company's sole responsibility is to its Client and this document does not exonerate parties to a transaction from exercising all their rights and obligations under the transaction documents. This document cannot be reproduced except in full, without prior written approval of the Company. Any unauthorized alteration, forgery or falsification of the content or appearance of this document is unlawful and offenders may be prosecuted to the fullest extent of the law. Unless otherwise stated the results shown in this test report refer only to the sample(s) tested and such sample(s) are retained for 14 days (for perishable samples) or 90 days only.

SGS (Malaysia) Sdn.Bhd.  
(Company No. 10871-T)

Lot 4, Persiaran Jubli Perak, Seksyen 22, 40300 Shah Alam, Selangor Darul Ehsan, Malaysia.  
t +6(03) 7627 0080 f +6 (03) 7627 0082 [www.sgs.com](http://www.sgs.com)

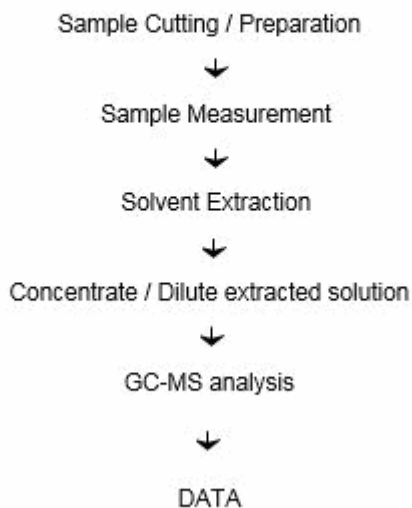


## TEST REPORT:

No. CRSSA/200336368-CA35086  
Job Ref. CRS/2020-03-02-025

REPORTED DATE: 12/03/2020

### DETERMINATION OF PHTHALATES WITH GC-MS BY IEC 62321-8:2017



SIGNED FOR AND ON BEHALF OF  
SGS (MALAYSIA) SDN BHD

*Chee Tuck Choon*  
CHEE TUCK CHOON  
SECTION HEAD  
IKM NO. M/3983/6401/12/14



Test Report Form No.: SGS/TR/CRS/001, Ver: 6.0, Effective Date: 13/01/2020

\*\*\* End of test report \*\*\*

Page 7 of 7

This document is issued by the Company subject to its General Conditions of Service printed overleaf, available on request or accessible at <https://www.sgs.com/en/terms-and-conditions> and, for electronic format documents, subject to Terms and Conditions for Electronic Documents at <https://www.sgs.com/en/terms-and-conditions/terms-e-document>. Attention is drawn to the limitation of liability, indemnification and jurisdiction issues defined therein. Any holder of this document is advised that information contained hereon reflects the Company's findings at the time of its intervention only and within the limits of Client's instructions, if any. The Company's sole responsibility is to its Client and this document does not exonerate parties to a transaction from exercising all their rights and obligations under the transaction documents. This document cannot be reproduced except in full, without prior written approval of the Company. Any unauthorized alteration, forgery or falsification of the content or appearance of this document is unlawful and offenders may be prosecuted to the fullest extent of the law. Unless otherwise stated the results shown in this test report refer only to the sample(s) tested and such sample(s) are retained for 14 days (for perishable samples) or 90 days only.

SGS (Malaysia) Sdn.Bhd.  
(Company No. 10871-T)

Lot 4, Persiaran Jubli Perak, Seksyen 22, 40300 Shah Alam, Selangor Darul Ehsan, Malaysia.  
t +6(03) 7627 0080 f +6 (03) 7627 0082 [www.sgs.com](http://www.sgs.com)